

Monticello Elementary School

NEWSLETTER



April 5, 2024

1001 Cambridge Place
Tracy, California 95377
Phone: 209.833.9300
Fax: 209.833.9317

Tessa Bunch, Principal
Peggi Johnson, Principal's Secretary
Michelle Zabaldo, Attendance Clerk
www.Jeffersonschooldistrict.com



Good Evening Monticello Families,

We have had a busy week here at Monticello! Just a reminder, Talent Show applications are due April 15th. Also, MJPFA will be hosting their annual Family Dance on Friday, May 3 and the last movie night of the year on May 10th. Open House is coming on April 16th from 6-7 pm. We look forward to seeing you there!

As a reminder, students cannot be at the gate prior to 8 am without an adult. All students arriving prior to 8 am will be directed to the cafeteria unless they have an adult with them. The cafeteria opens daily at 7:30 am. Thank you for your cooperation in this matter.

Next Minimum Day Monday, April 8th.

Thank you,

Mrs. Bunch

UPCOMING DATES:

April 15 - Talent Show
applications due (see
info below)

April 16 - Open House
from 6-7pm

May 3 - MJPFA Family
Dance

May 10 - Outdoor Movie
Night, hosted by MJPFA

Every Monday:
Minimum Day!
1:30pm Release - All
grades

Tuesday-Friday:
K-3rd Gr. - 2pm release
4th Gr. - 3pm release



REMINDER: If your child is going to be absent for any reason, please email Michelle Zabaldo, Monticello's Attendance Clerk at mzabaldo@jsdtracy.com each day your student is absent.

Monticello School Talent Show

If your child is interested in trying out for the talent show, please click on the link below. Applications are due by April 15th at 3:30pm.

[Talent Show Application](#)



2024 - 2025 Instructional Calendar

Jefferson School District 2024-2025 Instructional Calendar

| JULY | | | | |
|------|----|----|----|----|
| M | T | W | TH | F |
| 1 | 2 | 3 | 4 | 5 |
| 8 | 9 | 10 | 11 | 12 |
| 15 | 16 | 17 | 18 | 19 |
| 22 | 23 | 24 | 25 | 26 |
| 29 | 30 | 31 | | |

| AUGUST | | | | |
|--------|----|----|----|----|
| M | T | W | TH | F |
| | | | 1 | 2 |
| 5* | 6 | 7 | 8 | 9 |
| 12* | 13 | 14 | 15 | 16 |
| 19* | 20 | 21 | 22 | 23 |
| 26* | 27 | 28 | 29 | 30 |

| SEPTEMBER | | | | |
|-----------|------|------|------|------|
| M | T | W | TH | F |
| 2 | 3 | 4 | 5 | 6 |
| 9* | 10 | 11 | 12 | 13 |
| 16* | 17 | 18 | 19 | 20 |
| 23 | 24** | 25** | 26** | 27** |
| 30* | | | | |

| OCTOBER | | | | |
|---------|----|----|----|----|
| M | T | W | TH | F |
| | 1 | 2 | 3 | 4 |
| 7 | 8 | 9 | 10 | 11 |
| 14* | 15 | 16 | 17 | 18 |
| 21* | 22 | 23 | 24 | 25 |
| 28* | 29 | 30 | 31 | |

| NOVEMBER | | | | |
|----------|----|----|----|----|
| M | T | W | TH | F |
| | | | | 1 |
| 4* | 5 | 6 | 7 | 8 |
| 11 | 12 | 13 | 14 | 15 |
| 18* | 19 | 20 | 21 | 22 |
| 25 | 26 | 27 | 28 | 29 |

| DECEMBER | | | | |
|----------|----|----|----|----|
| M | T | W | TH | F |
| 2* | 3 | 4 | 5 | 6 |
| 9* | 10 | 11 | 12 | 13 |
| 16* | 17 | 18 | 19 | 20 |
| 23 | 24 | 25 | 26 | 27 |
| 30 | 31 | | | |

| JANUARY | | | | |
|---------|----|----|----|----|
| M | T | W | TH | F |
| | | 1 | 2 | 3 |
| 6* | 7 | 8 | 9 | 10 |
| 13* | 14 | 15 | 16 | 17 |
| 20 | 21 | 22 | 23 | 24 |
| 27* | 28 | 29 | 30 | 31 |

| FEBRUARY | | | | |
|----------|----|----|----|----|
| M | T | W | TH | F |
| 3 | 4 | 5 | 6 | 7 |
| 10 | 11 | 12 | 13 | 14 |
| 17 | 18 | 19 | 20 | 21 |
| 24 | 25 | 26 | 27 | 28 |

| MARCH | | | | |
|-------|----|----|----|----|
| M | T | W | TH | F |
| 3* | 4 | 5 | 6 | 7 |
| 10* | 11 | 12 | 13 | 14 |
| 17* | 18 | 19 | 20 | 21 |
| 24* | 25 | 26 | 27 | 28 |
| 31* | | | | |

| APRIL | | | | |
|-------|----|----|----|----|
| M | T | W | TH | F |
| | 1 | 2 | 3 | 4 |
| 7* | 8 | 9 | 10 | 11 |
| 14* | 15 | 16 | 17 | 18 |
| 21 | 22 | 23 | 24 | 25 |
| 28* | 29 | 30 | | |

| MAY | | | | |
|-----|----|----|-----|----|
| M | T | W | TH | F |
| | | | 1 | 2 |
| 5* | 6 | 7 | 8 | 9 |
| 12* | 13 | 14 | 15 | 16 |
| 19* | 20 | 21 | 22 | 23 |
| 26 | 27 | 28 | 29* | 30 |

| JUNE | | | | |
|------|----|----|----|----|
| M | T | W | TH | F |
| 2 | 3 | 4 | 5 | 6 |
| 9 | 10 | 11 | 12 | 13 |
| 16 | 17 | 18 | 19 | 20 |
| 23 | 24 | 25 | 26 | 27 |
| 30 | | | | |

Total Instructional School Days

| | |
|--------------|------------|
| August | 20 |
| September | 19 |
| October | 18 |
| November | 14 |
| December | 15 |
| January | 19 |
| February | 18 |
| March | 16 |
| April | 21 |
| May | 20 |
| Total | 180 |

| | |
|--|----|
| Holidays | |
| Students First Day | |
| Students Last Day | |
| Minimum Day (1:30 pm Release) | * |
| Minimum Day (2 pm Release) | ** |
| Teacher First Day/ Full Day | |
| Virtual Full Day Keenan | |
| Teacher Last Day/ Half Day | |
| End of First/Second Trimester | |
| P/T Conference (no students) | |
| Professional Development Day (MOU) (no students) | |






Board Approved: February 13, 2024



April



2024

| Monday | Tuesday | Wednesday | Thursday | Friday |
|---|--|--|--|---|
|  1 NO SCHOOL | 2 Grilled Cheese Sandwich V Sunbutter and Jelly Sandwich Assorted Fruit & Vegetables | 3 Taco Nada Sunbutter and Jelly Sandwich Assorted Fruit & Vegetables | 4 French Bread Pizza V Sunbutter and Jelly Sandwich Assorted Fruit & Vegetables | 5 Dominos Cheese Pizza V Sunbutter and Jelly Sandwich Assorted Fruit & Vegetables |
| 8 Pancake and Turkey Sausage on a Stick Sunbutter and Jelly Sandwich Assorted Fruit & Vegetables | 9 Chicken Taquitos Sunbutter and Jelly Sandwich Assorted Fruit & Vegetables | 10 Chicken Smackers Sunbutter and Jelly Sandwich Assorted Fruit & Vegetables |  11 Chicken Patty Sandwich Sunbutter and Jelly Sandwich Assorted Fruit & Vegetables | 12 Dominos Cheese Pizza V Sunbutter and Jelly Sandwich Assorted Fruit & Vegetables |
| 15 Chicken, Cheese and Rice Burrito Sunbutter and Jelly Sandwich Assorted Fruit & Vegetables | 16 Grilled Cheese Sandwich V Sunbutter and Jelly Sandwich Assorted Fruit & Vegetables | 17 Taco Nada Sunbutter and Jelly Sandwich Assorted Fruit & Vegetables |  18 Chicken Teriyaki Bowl Sunbutter and Jelly Sandwich Assorted Fruit & Vegetables | 19 Dominos Cheese Pizza V Sunbutter and Jelly Sandwich Assorted Fruit & Vegetables |
| 22 Pancake and Turkey Sausage on a Stick Sunbutter and Jelly Sandwich Assorted Fruit & Vegetables | 23 Grilled Cheese Sandwich V Sunbutter and Jelly Sandwich Assorted Fruit & Vegetables | 24 Chicken Smackers Sunbutter and Jelly Sandwich Assorted Fruit & Vegetables |  25 Cheese Enchilada V Sunbutter and Jelly Sandwich Assorted Fruit & Vegetables | 26 Dominos Cheese Pizza V Sunbutter and Jelly Sandwich Assorted Fruit & Vegetables |
|  29 Chicken, Cheese and Rice Burrito Sunbutter and Jelly Sandwich Assorted Fruit & Vegetables | 30 Mozzarella Bread Sticks V with Marinara Sauce Sunbutter and Jelly Sandwich Assorted Fruit & Vegetables | Chicken Smackers Sunbutter and Jelly Sandwich Assorted Fruit & Vegetables | Chicken Taquitos Sunbutter and Jelly Sandwich Assorted Fruit & Vegetables | Dominos Cheese Pizza V Sunbutter and Jelly Sandwich V-Vegetarian Assorted Fruit & Vegetables |

The USDA and CDE are equal opportunity providers and employers. Web site: Jeffersonschooldistrict.com
 Visit mymealtime.com to make pre-payments on your childs account or apply for free and reduced meals.

MONTICELLO'S REGULAR DAY SCHEDULE

| | | |
|--------------------|-------------------------|-----------------------|
| Warning Bell | 8:10 A.M. | All Grades |
| Instruction Begins | 8:15 A.M. | All Grades |
| Recess | 9:25 A.M. ~ 9:39 A.M. | Kinder (Kinder Yard) |
| Recess | 9:40 A.M. ~ 9:54 A.M. | Kinder (Kinder Yard) |
| Recess | 9:45 A.M. ~ 9:59 A.M. | 1, 2, SDC (Main Yard) |
| Recess | 10:05 A.M. ~ 10:19 A.M. | 3, 4 (Main Yard) |
| Recess | 10:00 A.M. ~ 10:14 A.M. | TK (Kinder Yard) |
| Lunch | 10:50 A.M. ~ 11:10 A.M. | TK |
| Lunch Recess | 11:10 A.M. ~ 11:35 A.M. | TK (Kinder Yard) |
| Lunch | 10:55 A.M. ~ 11:15 A.M. | Kinder |
| Lunch Recess | 11:15 A.M. ~ 11:40 A.M. | Kinder (Big Yard) |
| Lunch | 11:10 A.M. ~ 11:35 A.M. | 1st Grade/SDC |
| Lunch Recess | 11:35 A.M. ~ 11:55 A.M. | 1st Grade/SDC |
| Lunch | 11:20 A.M. ~ 11:45 A.M. | 2nd Grade |
| Lunch Recess | 11:45 A.M. ~ 12:05 P.M. | 2nd Grade |
| Lunch | 11:35 A.M. ~ 12:00 P.M. | 3rd Grade |
| Lunch Recess | 12:00 P.M. ~ 12:20 P.M. | 3rd Grade |
| Lunch | 12:00 P.M. ~ 12:25 P.M. | 4th Grade |
| Lunch Recess | 12:25 P.M. ~ 12:45 P.M. | 4th Grade |
| Dismissal | 2:00 P.M. | TK ~ 3rd Grade |
| Dismissal | 3:00 P.M. | 4th Grade |

MONTICELLO'S MINIMUM DAY SCHEDULE (MONDAY)

| | | |
|--------------------|-------------------------|-----------------------|
| Warning Bell | 8:10 A.M. | All Grades |
| Instruction Begins | 8:15 A.M. | All Grades |
| Recess | 9:25 A.M. ~ 9:39 A.M. | Kinder (Kinder Yard) |
| Recess | 9:40 A.M. ~ 9:54 A.M. | Kinder (Kinder Yard) |
| Recess | 9:45 A.M. ~ 9:59 A.M. | 1, 2, SDC (Main Yard) |
| Recess | 10:05 A.M. ~ 10:19 A.M. | 3, 4 (Main Yard) |
| Recess | 10:00 A.M. ~ 10:14 A.M. | TK (Kinder Yard) |
| Lunch | 10:50 A.M. ~ 11:10 A.M. | TK |
| Lunch Recess | 11:10 A.M. ~ 11:35 A.M. | TK (Kinder Yard) |
| Lunch | 10:55 A.M. ~ 11:15 A.M. | Kinder |
| Lunch Recess | 11:15 A.M. ~ 11:40 A.M. | Kinder (Big Yard) |
| Lunch | 11:10 A.M. ~ 11:35 A.M. | 1st Grade/SDC |
| Lunch Recess | 11:35 A.M. ~ 11:55 A.M. | 1st Grade/SDC |
| Lunch | 11:20 A.M. ~ 11:45 A.M. | 2nd Grade |
| Lunch Recess | 11:45 A.M. ~ 12:05 P.M. | 2nd Grade |
| Lunch | 11:45 A.M. ~ 12:05 P.M. | 4th Grade |
| Lunch Recess | 12:05 P.M. ~ 12:30 P.M. | 4th Grade |
| Lunch | 12:00 P.M. ~ 12:20 P.M. | 3rd Grade |
| Lunch Recess | 12:20 P.M. ~ 12:45 P.M. | 3rd Grade |
| Dismissal | 1:30 P.M. | All Grades |

PBIS Parent/Family Survey

Please click on the link below if you would like to give us some feedback on how Monticello is implementing Positive Behavior Supports and Interventions.

<https://forms.gle/KhNTaVrywzLsWPRY7>



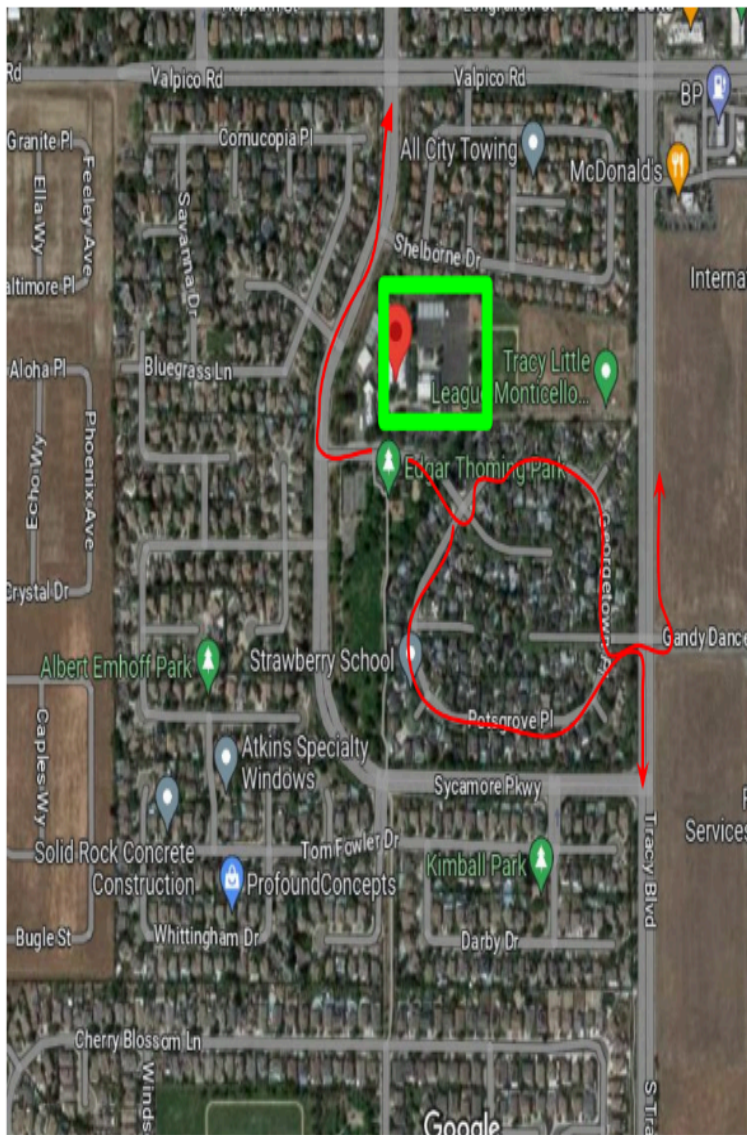
2023-2024 ASB Activity Calendar

| April 2024 | | | | | | | May 2024 | | | | | | |
|--|------|----|----|----|------|----|--|----|----|----|------|------|----|
| S | M | T | W | T | F | S | S | M | T | W | T | F | S |
| | 1 | 2 | 3 | 4 | ★ 5 | 6 | | | | 1 | 2 | 🐾 3 | 4 |
| 7 | 8 | 9 | 10 | 11 | 🐾 12 | 13 | 5 | 6 | 7 | 8 | 9 | 🐾 10 | 11 |
| 14 | 15 | 16 | 17 | 18 | 🐾 19 | 20 | 12 | 13 | 14 | 15 | 16 | 🐾 17 | 18 |
| 21 | ★ 22 | 23 | 24 | 25 | 🐾 26 | 27 | 19 | 20 | 21 | 22 | 23 | ★ 24 | 25 |
| 28 | 29 | 30 | | | | | 26 | 27 | 28 | 29 | ★ 30 | 31 | |
| | | | | | | | | | | | | | |
| APRIL NOTABLES | | | | | | | MAY NOTABLES | | | | | | |
| 4/5 - Autism Awareness Day - Wear Blue | | | | | | | 5/24 - Red, White, & Blue Day | | | | | | |
| 4/22 - Earth Day - Wear Green and | | | | | | | 5/30 - Last Day of School - Hawaiian Day | | | | | | |
| Pick Up Trash with Jaggy | | | | | | | | | | | | | |



An aerial photograph of the Monticello Elementary School campus, overlaid with a diagram showing building numbers and traffic flow arrows. The buildings are numbered 1 through 27. A red location pin marks the school's address: 1001 Cambridge, Tracy, CA 95376. The map includes labels for 'Monticello Elementary', 'Borgna / Hohn', and '1/K'. Colored arrows indicate traffic flow for different events: purple arrows for the 'Borgna / Hohn' event, blue arrows for the '1/K' event, yellow arrows for the 'K1 (Hohn)' event, green arrows for the 'K2 (Borgna)' event, and red arrows for the '2' event. The arrows show various paths around the school buildings and parking areas.

9



Traffic reminders:

- Please remain in your vehicle for drop off and pick up.
- Students should be ready to exit the vehicle as soon and as you enter the driveway
- When exiting onto Cambridge from the school parking lot or the park parking lot, please exit left or right. Please exit whichever way has less traffic to continue to move the traffic line.
- No U-turns at anytime
- The neighborhood next to Monticello is a circle and will lead you to Tracy Blvd. Drivers can make a left on Tracy Blvd to get to Valpico Rd. or a right on Tracy Blvd to get to Linne Rd. Please utilize this exit as traffic allows
- Drivers should make a right on Sycamore Parkway during heavy traffic times.



Absences Add up!

#SCHOOLEVERYDAY

Missing just 2 days a month
means a child misses 10% of the
school year.



RUPERT GANZER

Jefferson School District
2023 - 2024 Instructional Calendar

| JULY | | | | |
|------|----|----|----|----|
| M | T | W | TH | F |
| 3 | 4 | 5 | 6 | 7 |
| 10 | 11 | 12 | 13 | 14 |
| 17 | 18 | 19 | 20 | 21 |
| 24 | 25 | 26 | 27 | 28 |
| 31 | | | | |

| AUGUST | | | | |
|--------|----|----|----|----|
| M | T | W | TH | F |
| | 1 | 2 | 3 | 4 |
| 7* | 8 | 9 | 10 | 11 |
| 14* | 15 | 16 | 17 | 18 |
| 21* | 22 | 23 | 24 | 25 |
| 28* | 29 | 30 | 31 | |

| SEPTEMBER | | | | |
|-----------|------|------|------|------|
| M | T | W | TH | F |
| | | | | 1 |
| 4 | 5 | 6 | 7 | 8 |
| 11* | 12 | 13 | 14 | 15 |
| 18* | 19 | 20 | 21 | 22 |
| 25 | 26** | 27** | 28** | 29** |

| OCTOBER | | | | |
|---------|----|----|----|----|
| M | T | W | TH | F |
| 2* | 3 | 4 | 5 | 6 |
| 9 | 10 | 11 | 12 | 13 |
| 16* | 17 | 18 | 19 | 20 |
| 23* | 24 | 25 | 26 | 27 |
| 30* | 31 | | | |

| NOVEMBER | | | | |
|----------|----|----|----|----|
| M | T | W | TH | F |
| | | 1 | 2 | 3 |
| 6* | 7 | 8 | 9 | 10 |
| 13* | 14 | 15 | 16 | 17 |
| 20 | 21 | 22 | 23 | 24 |
| 27* | 28 | 29 | 30 | |

| DECEMBER | | | | |
|----------|----|-----|----|----|
| M | T | W | TH | F |
| | | | | 1 |
| 4* | 5 | 6 | 7 | 8 |
| 11* | 12 | 13 | 14 | 15 |
| 18 | 19 | 20* | 21 | 22 |
| 25 | 26 | 27 | 28 | 29 |

| JANUARY | | | | |
|---------|----|----|----|----|
| M | T | W | TH | F |
| 1 | 2 | 3 | 4 | 5 |
| 8* | 9 | 10 | 11 | 12 |
| 15 | 16 | 17 | 18 | 13 |
| 22* | 23 | 24 | 25 | 26 |
| 29* | 30 | 31 | | |

| FEBRUARY | | | | |
|----------|----|----|----|----|
| M | T | W | TH | F |
| | | | 1 | 2 |
| 5* | 6 | 7 | 8 | 9 |
| 12* | 13 | 14 | 15 | 16 |
| 19 | 20 | 21 | 22 | 23 |
| 26* | 27 | 28 | 29 | |

| MARCH | | | | |
|-------|----|----|----|----|
| M | T | W | TH | F |
| | | | | 1 |
| 4* | 5 | 6 | 7 | 8 |
| 11 | 12 | 13 | 14 | 15 |
| 18* | 19 | 20 | 21 | 22 |
| 25* | 26 | 27 | 28 | 29 |

| APRIL | | | | |
|-------|----|----|----|----|
| M | T | W | TH | F |
| 1 | 2 | 3 | 4 | 5 |
| 8* | 9 | 10 | 11 | 12 |
| 15* | 16 | 17 | 18 | 13 |
| 22* | 23 | 24 | 25 | 26 |
| 29* | 30 | | | |

| MAY | | | | |
|-----|----|----|-----|----|
| M | T | W | TH | F |
| | | 1 | 2 | 3 |
| 6* | 7 | 8 | 9 | 10 |
| 13* | 14 | 15 | 16 | 17 |
| 20* | 21 | 22 | 23 | 24 |
| 27 | 28 | 29 | 30* | 31 |

| JUNE | | | | |
|------|----|----|----|----|
| M | T | W | TH | F |
| 3 | 4 | 5 | 6 | 7 |
| 10 | 11 | 12 | 13 | 14 |
| 17 | 18 | 19 | 20 | 21 |
| 24 | 25 | 26 | 27 | 28 |

| Total Instructional School Days | |
|---------------------------------|------------|
| August | 19 |
| September | 19 |
| October | 17 |
| November | 16 |
| December | 14 |
| January | 19 |
| February | 19 |
| March | 15 |
| April | 21 |
| May | 21 |
| Total | 180 |

| | |
|--|----|
| Holidays | |
| Students First Day | |
| Students Last Day | |
| Minimum Day (1:30 pm Release) | * |
| Minimum Day (2 pm Release) | ** |
| Teachers First/Last Work Day | |
| Teachers First/Last Work Day | |
| End of First/Second Trimester | |
| P/T Conference (no students) | |
| Professional Development Day (MOU) (no students) | |

JUST A FRIENDLY REMINDER THAT NO DOGS ARE ALLOWED ON CAMPUS.





JEFFERSON
SCHOOL DISTRICT

DELAC INVITATION

YOUR VOICE MATTERS!

**DISTRICT ENGLISH
LANGUAGE ADVISORY
COMMITTEE (DELAC)**

Dates:

- ✓ February 15, 3:30-5:00 p.m.
- ✓ March 27, 3:30-5:00 p.m.
- ✓ May 1, 3:30-5:00 p.m.

Purpose of DELAC:

- ✓ The DELAC leads the way in developing and providing input in establishing district programs and goals for English Learners. The DELAC works directly with the board regarding the needs of English Learners.

More Information

- ☎ (209) 836-3388
- 🌐 www.jeffersonschooldistrict.com
- ✉ bramon@jdsdtracy.com
- ✓ School age child care and snacks provided!



జెఫెర్సన్
పాఠశాల జిల్లా

DELAC ఆహ్వానం

మీ వాయిస్ ముఖ్యం!

**డిస్ట్రిక్ట్ ఇంగ్లీష్ లాంగ్వేజ్
అడ్వైజరీ కమిటీ (DELAC)**

తేదీలు:

- ✓ ఫిబ్రవరి 15, 3:30-5:00 p.m.
- ✓ మార్చి 27, 3:30-5:00 p.m.
- ✓ మే 1, 3:30-5:00 p.m.

DELAC యొక్క ఉద్దేశ్యం:

- ✓ ఇంగ్లీష్ లెర్నింగ్ కోసం జిల్లా కార్యక్రమాలు మరియు లక్ష్యాలును ఏర్పాటు చేయడంలో చేపట్టే చేయడం మరియు ఇన్పుట్ అందించడంలో DELAC ముందుంది. DELAC ఇంగ్లీష్ లెర్నింగ్ అవసరాలకు సంబంధించి బోర్డులో చేరుగా పని చేస్తుంది.

మరింత సమాచారం

- ☎ (209) 836-3388
- 🌐 www.jeffersonschooldistrict.com
- ✉ bramon@jdsdtracy.com
- ✓ పాఠశాల వయస్సు పిల్లల సంరక్షణ మరియు స్నాక్స్ అందించబడ్డాయి!



జెఫెర్సన్
పள்ளి మாவட்டం

DELAC அழைப்பிதழ்

உங்கள் குரல் முக்கியமானது!

**மாவட்ட ஆங்கில
மொழி ஆலோசனைக்
குழு (DELAC)**

தேதிகள்:

- ✓ பிப்ரவரி 15, மாலை 3:30-5:00
- ✓ மார்ச் 27, மாலை 3:30-5:00
- ✓ மே 1, 3:30-5:00 பிற்பகல்

DELAC இன் நோக்கம்:

- ✓ ஆங்கிலம் கற்பலர்களுக்கான மாவட்ட திட்டங்கள் மற்றும் இலக்குகளை நிறுలவுதல் உள்ளிடுகளை உருவாக்கி வழங்குவதில் DELAC முன்னணியில் உள்ளது. ஆங்கிலம் கற்பலர்களின் தேவைகள் தொடர்பாக DELAC நேரடியாக குழுவின் இணைந்து செயல்படுகிறது.

மேலும் தகவல்

- ☎ (209) 836-3388
- 🌐 www.jeffersonschooldistrict.com
- ✉ bramon@jdsdtracy.com
- ✓ పள்ளి వయస్సు குழந்தை బర్రామరిప్ప మరియు నింబణణపటకల వడ్రుకబుడ్రు



JEFFERSON
SCHOOL DISTRICT

INVITACION DELAC

¡TU VOZ IMPORTA!

**COMITÉ ASESOR
DISTRITAL DEL IDIOMA
INGLÉS (DELAC)**

Fechas:

- ✓ 15 Febrero, 3:30-5:00 p.m.
- ✓ 27 Marzo, 3:30-5:00 p.m.
- ✓ 1 Mayo, 3:30-5:00 p.m.

Propósito de DELAC:

- ✓ El DELAC lidera el camino en el desarrollo y aportación de opiniones para establecer programas y objetivos del distrito para los estudiantes de inglés. El DELAC trabaja directamente con la junta con respecto a las necesidades de los estudiantes de inglés.

Más Información

- ☎ (209) 836-3388
- 🌐 www.jeffersonschooldistrict.com
- ✉ bramon@jdsdtracy.com
- ✓ Se proporcionan refrescos y cuidado de niños en edad escolar.

